

# CARE FOR CONCRETE



**CRACK 'N PATCH™**

# Emergency Concrete Repair: cracks - holes - spalls with CRACK 'N PATCH

## Guaranteed to work...

Wears 10 times better than concrete.

**D**eterioration due to heavy traffic, harsh chemicals and exposure to the elements can be costly and dangerous. Repair it with 100% solids co-polymer epoxy **CRACK 'N PATCH**.

- Easily installed... no experience necessary.
- Excellent adhesion to small or large cracks and holes.
- Hardens quickly for heavy traffic.
- Non-shrinking.
- Odorless... USDA/FDA accepted.
- Repair for industrial production/warehouse floors, bridges, tunnels, sidewalks, driveways, parking ramps, etc.

## Don't shut down...

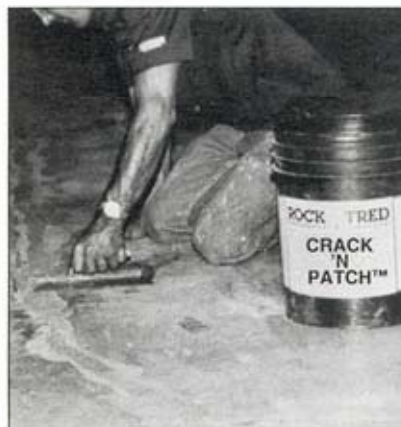
Pick a formula for your conditions.

With three temperature formulations, CRACK 'N PATCH can be used in more concrete repair applications than any other mortar:

- Standard Formula CRACK 'N PATCH (SF) cures at 50°F and above
- Cooler Formula CRACK 'N PATCH (CF) cures between 20°F and 50°F
- ☆ Freezer Formula CRACK 'N PATCH (FF) cures between -30°F and 20°F

**Coverage Rates:**

- Per Unit — 27 sq. ft. at 1/8" thickness or fill 72 lin. ft. of 1" wide by 1" deep 'V' crack.
- ☆ Per Unit — 10 sq. ft. at 1/8" thickness or fill 30 lin. ft. of 1" wide by 1" deep 'V' crack.



Crack Repair

# Easy to install...

## Preparation:

For cracks or joints, it is best to chip or rout open a 'V' approximately 1" wide by 1" deep or larger. Also chip small holes or surface spalls clean. Chemically clean concrete contaminated with oils, sugars, animal fats, etc. Prior to mixing, allow the Cooler and Freezer formulas to cool down for 1 hour at the temperatures they will be installed.



## Mixing:

Remove individually packaged CRACK 'N PATCH™ parts A, B and C from the 5-Gal bucket.



Then, mix parts A&B together in the 5-Gal bucket. Following this slowly add part C (aggregate) and thoroughly blend.

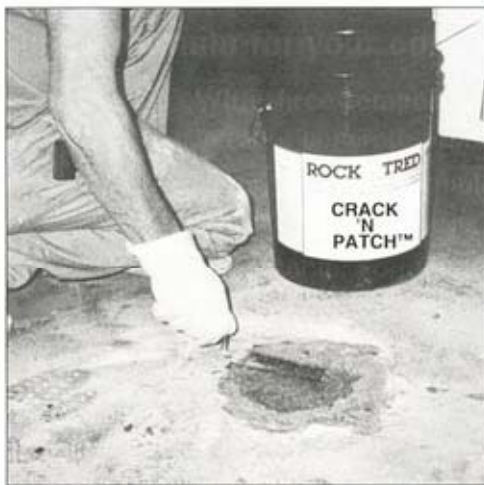


## Installing:

Apply the above mixture into the repair area, fill to full depth and level off with slight pressure. Clean-up tools with soapy water within 15 minutes after mixing.



Low cost, ease of application and convenient pre-measured packaging make **CRACK 'N PATCH™** the choice for your repair



Patching



Coving

**Be Prepared:** Keep several kits of CRACK 'N PATCH™ in stock at all times for immediate concrete repairs.

## **CRACK 'N PATCH™ Specifications:**

### **Performance Properties**

Compressive strength (ASTM C579) .....	16,200 psi
Adhesion to concrete (ASTM D4541) .....	720 psi
Tensile strength (ASTM C307) .....	3,200 psi
Wear resistance (compared to concrete) .....	>10 times

### **Physical Properties**

Weight (5 gal unit) .....	Approx. 36 lbs. (20 lbs. 3.5 gal unit for Freezer Formula)
Color .....	Concrete Appearance (Custom Colors Available at Additional Cost)
Characteristics .....	Odorless and Non-Flammable
Kit Contains: .....	Premeasured Parts A&B Liquids, Aggregate & Mixing Bucket
Storage Life (unopened) .....	2 years

Note: For a set-time relative to your specific air and floor temperature, contact ROCK-TRED

**Warranty:** The ROCK-TRED Corporation guarantees CRACK 'N PATCH to be free of manufacturing defects and to comply with all properties stated herein. The ROCK-TRED Corporation will replace any material that does not prove satisfactory or refund the purchase price when a written report is made within 30 days of shipment.

Also available from **ROCK-TRED...**

### **POXI-ROCK™**



Solvent-free, 100% solids epoxy floor protection coating and/or trowel-on for heavy industrial traffic...non-skid...USDA/FDA accepted...thickness, 10 mils and up. Cures at temperatures from 20°F to 85°F.

### **NOVO-POXI™**



Novolac based, 100% solids epoxy — Protects floors and secondary containments against concentrated acids, solvents and destructive chemicals... thickness, 1/16" and up...USDA/FDA accepted.

### **AQUA-POXI™**



Seals hard surfaces, makes old concrete and epoxy floors look new. Helps prevent chipping, spalling and dusting. Inexpensive clear and colored sealer for light to moderate traffic applications.



**CONCRETE PROTECTION SINCE 1939**

**Worldwide Service**

**Manufacturing and Headquarters: 7440 N. St. Louis Ave., Skokie, IL 60076-4032**

**CALL 1-800-762-8733 or Fax 847-679-6665**

**for more information and to place your order.**

**<http://www.rock-tred.com>**

## TO ORDER:



Please fill in and mail this card, or fax it to 847/679-6665. Better yet call 1-800-762-8733 and charge it.

Please specify CRACK 'N PATCH repair kit and quantity needed

- Regular CRACK 'N PATCH kit (85° to 50°F) \_\_\_\_\_ @ \$59.00ea = \_\_\_\_\_
- Cooler Formula CRACK 'N PATCH kit (50° to 20°F) \_\_\_\_\_ @ \$67.00ea = \_\_\_\_\_
- Freezer Formula CRACK 'N PATCH kit (20° to -30°F) \_\_\_\_\_ @ \$39.00ea = \_\_\_\_\_
- Please have a representative call \_\_\_\_\_ P.O. No. \_\_\_\_\_

Name: \_\_\_\_\_  
Company: \_\_\_\_\_  
Address: \_\_\_\_\_ City: \_\_\_\_\_  
State: \_\_\_\_\_ ZIP: \_\_\_\_\_  
Phone: \_\_\_\_\_ Fax: \_\_\_\_\_  
Best time and day to call: \_\_\_\_\_

## I am interested in other ROCK-TRED products...

Please fill in and mail this card, (or fax it to 847/679-6665) Please indicate which products or services you are interested in:

**Floor Protection Systems**      **Installation Services**

- POXI-ROCK™ (Description on back of brochure)     Coatings
- NOVO-POXI™ (Description on back of brochure)     1/4" or thicker resurfacing
- AQUA-POXI™ (Description on back of brochure)     Repairs
- Please have a representative call                     Secondary Containment

Name: \_\_\_\_\_  
Company: \_\_\_\_\_  
Address: \_\_\_\_\_ City: \_\_\_\_\_  
State: \_\_\_\_\_ ZIP: \_\_\_\_\_  
Phone: \_\_\_\_\_ Fax: \_\_\_\_\_  
Best time to and day call: \_\_\_\_\_

**CALL (800) ROC-TRED / (800) 762-8733**



**BUSINESS REPLY MAIL**  
FIRST CLASS MAIL PERMIT NO. 413 SKOKIE, IL

POSTAGE WILL BE PAID BY ADDRESSEE



7440 N. St. Louis Ave.  
Skokie, IL 60076-4032



NO POSTAGE  
NECESSARY  
IF MAILED  
IN THE  
UNITED STATES



**BUSINESS REPLY MAIL**  
FIRST CLASS MAIL PERMIT NO. 413 SKOKIE, IL

POSTAGE WILL BE PAID BY ADDRESSEE



7440 N. St. Louis Ave.  
Skokie, IL 60076-4032



NO POSTAGE  
NECESSARY  
IF MAILED  
IN THE  
UNITED STATES

